

DEPARTMENT OF SOCIAL SERVICES

744 P Street, Sacramento, CA 95814
(916) 445-7280



April 10, 1981

ALL-COUNTY INFORMATION NOTICE I-51-81

TO: ALL COUNTY WELFARE DIRECTORS

SUBJECT: APSB INFORMATIONAL WORKSHOP

REFERENCE:

The Office of Services to the Blind of the State Department of Social Services will be conducting a one day regional conference on Aid to the Potentially Self-Supporting Blind (APSB) on April 28, 1981, in Los Angeles and May 12, 1981, in San Francisco. This workshop will provide an exchange of information between the State and local levels as well as other state agencies and community based organizations regarding issues pertinent to services to blind individuals.

The agenda for this meeting will include an overview of the current APSB program, and a discussion of the SSI/SSP Self-Support Plan. There will also be short presentations by a Rehabilitation Counselor for the Blind, a Social Worker, and a Representative from Sensory Aids Foundation who will discuss their roles and how they relate to comprehensive services through interagency cooperation.

Due to the relevancy of these issues to the local servicing of visually impaired individuals, we strongly urge that all counties participate by having the Designated Worker(s) for the Blind and their Supervisor(s) attend.

Southern counties including San Luis Obispo, Kern, and San Bernardino are encouraged to attend the workshop in Los Angeles on Tuesday, April 28, 1981, in the Auditorium at 107 South Broadway.

All northern counties are invited to attend the workshop in San Francisco on Tuesday, May 12, 1981, at 350 McAllister, Room 1194, in the General Services Building. There is ample parking in both locations for a fee.

If you have any questions or need additional information, please call Lynda Bardis or Donna Brown at (916) 445-7280.

We would appreciate knowing how many staff will be attending from your county. Please return the following form to Lynda Bardis, Chief, Office of Services to the Blind, 744 "P" Street, Mail Station 5-134, Sacramento, California 95814, as soon as possible.

Sincerely,


MARION J. WOODS
Director

Attachment

cc: CWDA

County: _____

_____ Staff Members Will Attend The Workshop In:

☐

Los Angeles

☐

San Francisco

Agenda

AID TO THE POTENTIALLY SELF-SUPPORTING BLIND What It Is And How It Works

An Informational Workshop Offered By The
OFFICE OF SERVICES TO THE BLIND
State Department of Social Services

Los Angeles
Tuesday, April 28, 1981, 107 South Broadway
Auditorium

San Francisco
Tuesday, May 12, 1981, 350 McAllister, Room 1194
General Services Building

- 9:00 AM - REGISTRATION
- 9:30 AM - Welcome and Opening Session
Lynda Bardis, Chief, Office of Services to the Blind,
State Department of Social Services.
- 10:00 AM - "Everything you wanted to know about APSB but didn't know
whom to ask."
Lynda Bardis, Chief, Office of Services to the Blind,
State Department of Social Services.

Donna Brown, SSC I, Office of Services to the Blind,
State Department of Social Services.
- 11:45 AM - LUNCH
- 1:30 PM - "Plans for Self-Support - SSI/SSP or APSB . . . Which is better
for your client?"
Joe Kimmel, Program Consultant of the SSI-SSDI Program,
State Department of Rehabilitation.
- 3:00 PM - BREAK
- 3:30 PM - "What's happening in the community? Working together for the
client."
Elena Horwedel, Rehabilitation Counselor for the Blind,
State Department of Rehabilitation.

Mary Hilton, Consultant for the Blind - Los Angeles County,
Department of Social Services.

Barbara Hellmuth, Division Director, Social Services Adult
and Family Services - Alameda County.

Sharon Connor, Vocational Specialist Trainer - Sensory Aids
Foundation, Palo Alto.
- 4:30 PM - ADJOURNMENT

DEPARTMENT OF SOCIAL SERVICES

744 P Street, Sacramento, CA 95814
(916) 322-3141



April 8, 1981

ALL-COUNTY INFORMATION NOTICE I- 50-81

TO: ALL COUNTY WELFARE DIRECTORS

SUBJECT: DSS OFFICE OF REFUGEE SERVICES

REFERENCE: ACL 80-29, MAY 13, 1980 AND ACIN I-54-80, MAY 28, 1980

The purpose of this letter is to outline the organization and responsibilities of the Office of Refugee Services (ORS) in the Department of Social Services (DSS) and to provide County Welfare Departments (CWDs) with information about support services being provided to Indochinese refugees during Federal Fiscal Year (FFY) 1981 (October 1, 1980 through September 30, 1981) by agencies other than CWDs.

Office of Refugee Services

ORS was established in response to the enactment of the Refugee Act of 1980 (Public Law 96-212). This office centralizes responsibility for management of refugee assistance programs into a single component within DSS to provide greater assistance to CWDs in the administration of the Refugee Resettlement Program and the proposed Cuban/Haitian Entrant Program. The Chief of ORS, Ms. Jo Frederick, reports directly to the Director, DSS. An organization chart is attached (Attachment 1). Effective immediately, with the exceptions noted on the attached chart, CWDs are requested to address questions concerning the administration of refugee programs and other programs related to refugees or Cuban/Haitian entrants to:

Ms. Jo Frederick, Chief
Office of Refugee Services
Department of Social Services
744 P Street, M/S 17-09
Sacramento, CA 95814
Telephone: (916) 322-3141

Refugee Support Services


It has not been possible in the past for all CWDs to meet all of the needs of Indochinese refugees for support services. Therefore, DSS has contracted with agencies other than CWDs for the provision of complementary support services to

Indochinese refugees during FFY 1981. These agencies include the State Department of Education and the State Department of Mental Health, which are providing child day care services and mental health services, respectively, to Indochinese refugees through subcontracts with other organizations. Attached is a list of support service providers (Attachment 2). ORS is prepared to assist CWDs and these providers to coordinate their activities in order to ensure that the full range of services is made available to all eligible Indochinese refugees and to eliminate any duplication.

The rapid attainment of refugee self-support and self-sufficiency is primarily the result of CWDs, public and private agencies, and individuals committed to providing resettlement opportunities at the local level. ORS' goal is to help CWDs and other providers of refugee support services in the continued success of this effort.

A copy of the state's plan for Refugee Assistance and Services is enclosed for your information. Please contact Ms. Frederick and the ORS staff if you have any questions or concerns about the resettlement of refugees in California or the administration of the Refugee Resettlement Program.

Sincerely,

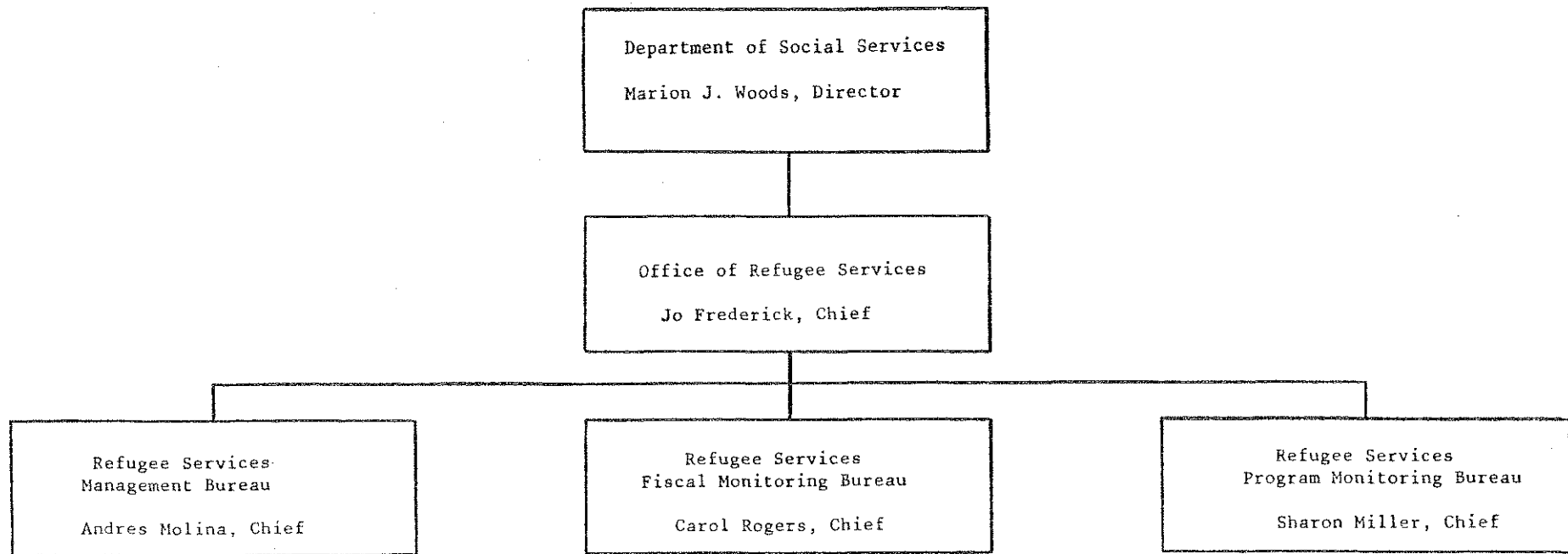


ROBERT ROWLEY
Chief Deputy Director

Attachments (County Welfare Directors only)

cc: CWBA

ORGANIZATION CHART



The Management Bureau is responsible for providing instructions, guidance, and assistance to CWDs on the delivery of special Refugee Cash Assistance and on the administration of the Refugee Unaccompanied Minors Program.* It is also responsible for policy questions related to refugee support services and for monitoring the Department's interagency agreements with the State Department of Mental Health and the State Department of Education for the provision of mental health services and child day care services, respectively, to refugees.

The Fiscal Monitoring Bureau is responsible for monitoring the fiscal and accounting systems and operations of service providers (other than CWDs) and providing them with training and technical assistance designed to ensure their financial integrity, their compliance with applicable regulations and contract provisions and the most effective and efficient use of program funds.**

The Program Monitoring Bureau is responsible for monitoring the delivery of support services to refugees by CWDs and by other public and private nonprofit agencies and for providing them with guidance and assistance designed to ensure that these services are provided in an effective, efficient, and equitable manner throughout the state.

*It should be noted that all matters relating to the program for Aid to Families with Dependent Children (AFDC) continue to be the responsibility of the AFDC Program Management Branch in the Welfare Program Operations Division, and all questions relating to AFDC should be referred to that Branch.

**The Fiscal Policy and Procedures Bureau (previously known as the County Fiscal Administration Bureau) in the Administration Division continues to have responsibility for all matters relating to the fiscal policy and procedures of CWDs and all questions relating to such matters should be referred to that Bureau.

2/24/81

STATE OF CALIFORNIA
 PROVIDERS OF SERVICES TO INDOCHINESE REFUGEES
 IN NORTHERN CALIFORNIA

| <u>Agency</u> | <u>Contact Person</u> | <u>Service Components</u> | <u>Area Served</u> |
|--|---|--|---|
| Catholic Community Services Catholic Social Service Indochinese Employment/Training 5890 Newman Court Sacramento, CA 95819 | Mr. Frank Griswold 916/452-7481 | Employment services ESL Vocational education | Sacramento and Solano Counties |
| Catholic Charities Diocese of Santa Rosa P.O. Box 4900 (898 Third Street) Santa Rosa, CA 95402 | Father Stephen J. Canny 707/528-8712 | Social services Health related services | Napa, Sonoma, Lake Mendocino, Humboldt and Del Norte Counties |
| Alameda/Contra Costa County Departments of Social Services 401 Broadway Oakland, CA 94607 | Mr. Aaron M. Henry 415/874-7430 | ESL Employment services Vocational education | Alameda and Contra Costa Counties |
| Catholic Charities Diocese of Oakland/ International Institute of the East Bay 433 Jefferson Street Oakland, CA 94607 | Mr. Jan Stephens 415/834-5656 | ESL Employment services Social services Health related services | Alameda and Contra Costa Counties (Major cities only) |
| Oakland Chinese Community Council, Inc. 310 Eighth Street, Suite 215 Oakland, CA 94607 | Ms. Judy Tang 415/893-5076 | Employment services | Alameda County and East Bay |
| Sequoia Adult School Broadway and Brewster Redwood City, CA 94063 | Mr. Norman Shapiro 415/369-6809 | ESL | Southern San Mateo County |
| Target Education and Welfare Council, Inc. 2615 Fair Oaks Avenue Redwood City, CA 94063 | Dr. Nguyen Canh 415/369-8249 | Social services Health related services | San Mateo County |

2/24/81

STATE OF CALIFORNIA
 PROVIDERS OF SERVICES TO INDOCHINESE REFUGEES
 IN NORTHERN CALIFORNIA

| <u>Agency</u> | <u>Contact Person</u> | <u>Service Components</u> | <u>Area Served</u> |
|--|---|---|--|
| Catholic Charities Diocese of Stockton 2451 Country Club Boulevard Stockton, CA 95204 | Mr. Vince Brown 209/948-1554 | Social services Health related services ESL* Employment services | San Joaquin and Stanislaus Counties |
| Yosemite Community College District Post Office Box 4065 Modesto, CA 95352 | Mr. Robert M. Mognis 209/526-2000, Ex. 211 | Vocational education ESL | Stanislaus County |
| Catholic Charities Diocese of Fresno 1510 North Fresno Street Fresno, CA 93703 | Mr. Joseph C. Laharty 209/237-0851 | ESL Employment services Social services Health related services | Fresno, Inyo, Kern, Kings, Madera, Mariposa, Merced and Tulare Counties |
| Fresno Community Council Indochinese Refugee Assistance Program 325 Crocker Bank Building 2145 Fresno Street Fresno, CA 93721 | Mr. Nathan D. Edwards 209/237-8359 | Social services | Fresno, Mariposa, Merced, Madera, Tulare, Kings and Kern Counties |
| Interfaith Service Bureau 4785 17th Avenue Sacramento, CA 95820 | Mr. Ninh Van Nguyen 916/484-1998 | Social services excluding home management Health related services | Sacramento and Sola Counties |
| Lutheran Social Services of Northern California and Nevada 1731 L Street Sacramento, CA 95814 | Reverend Paul B. Janke 916/ | Social services, home management only | Sacramento, Eastern Yolo and Western Placer Counties |
| Sacramento City Unified School District 1619 N Street Sacramento, CA 95814 | Mr. Charles K. Miura 916/454-8747 | ESL Vocational education | Sacramento, Yolo, and Placer Counties |

*English-As-A-Second Language

2/24/81

STATE OF CALIFORNIA
 PROVIDERS OF SERVICES TO INDOCHINESE REFUGEES
 IN NORTHERN CALIFORNIA

| <u>Agency</u> | <u>Contact Person</u> | <u>Service Components</u> | <u>Area Served</u> |
|--|---|--|--|
| Santa Clara County Health Department 976 Lenzen San Jose, CA 95126 | Mr. Chris Brown 408/279-6970 | Health related services | Santa Clara County |
| Foothill-DeAnza Community College District 12345 El Monte Road Los Altos Hills, CA 94022 | Occupational Training Institute Mr. Hector Saldana 415/948-5359 Bilingual Center Mr. Jorge Guevara 415/739-4612 | ESL VESL Vocational education | Shasta Clara County (Palo Alto to Gilroy) |
| San Jose Regional Programs San Jose Unified School District 999 Newhall Street San Jose, CA 95126 | Mr. Bich Ngo 408/985-7030 | ESL VESL Vocational education | San Jose, East Side Campbell and Santa Clara |
| Indochinese Resettlement and Cultural Center, Inc. 999 Newhall Street San Jose, CA 95126 | Mr. Y-Klong Adrong 408/249-7900 | Social services Employment services (Santa Clara only) | Santa Clara, Monterey and Santa Cruz Counties |
| Salinas Union High School District Adult and Community Education 431 West Alisal Street Salinas, CA 93901 | Ms. Sharon Miller 408/758-3931 | ESL | Salinas |
| Asian Americans for Community Involvement of Santa Clara County, Inc. 209 West Santa Clara Street San Jose, CA 95113 | Mr. Ed Kawazoe 415/494-8327 | Social services | Santa Clara County |

2/24/81

STATE OF CALIFORNIA
 PROVIDERS OF SERVICES TO INDOCHINESE REFUGEES
 IN NORTHERN CALIFORNIA

| <u>Agency</u> | <u>Contact Person</u> | <u>Service Components</u> | <u>Area Served</u> |
|--|------------------------------------|--|--|
| Center for Southeast Asian Refugee Resettlement 121 Leavenworth Street, 2nd Fl. San Francisco, CA 94102 | Mr. Michael Huynh 415/885-2743 | Employment services Social services | San Mateo, Marin and San Francisco |
| San Francisco Community College District 33 Gough Street (1311 Sutter Street) San Francisco, CA 94103 | Ms. Terry Pon 415/441-1176 | ESL Vocational education Employment services | San Francisco County |
| The Vietnamese Association of Friendship and Mutual Assistance of San Francisco Bay 1655 Folsom Street San Francisco, CA 94103 | Mr. Le Ngoc Linh 415/431-3500 | Vocational education Employment services | San Francisco County |
| International Institute of San Francisco 2209 Van Ness Avenue San Francisco, CA 94109 | Ms. Audrey Doughty 415/673-1720 | Social services (does not include health related services) | San Francisco County |
| Catholic Social Services of San Francisco 25 Taylor Street, 5th Floor San Francisco, CA 94102 | Ms. Diane Brede 415/775-4951 | Employment services Health related services | San Francisco County |
| The Buddhist Council for Refugee Rescue and Resettlement City of Ten Thousand Buddhas Talmage, CA 94581 | Mr. David Rounds 707/468-9155 | ESL | San Francisco, Marin Sonoma, Napa, Mendocino, Lake, Humboldt and Del Norte Counties |
| Indo-Chinese American Council P.O. Box 4566 Santa Rosa, CA 95402 | Mr. Nhon Van Tran 707/542-3773 | Employment services ESL | Sonoma, Mendocino, Napa, Lake, Humboldt and Del Norte Counties |

STATE OF CALIFORNIA
 PROVIDERS OF SERVICES TO INDOCHINESE REFUGEES
 IN SOUTHERN CALIFORNIA

| <u>Agency</u> | <u>Contact Person</u> | <u>Service Components</u> | <u>Area Served</u> |
|---|--|--|---|
| San Diego County Department of Public Welfare 7947 Mission Center Court San Diego, CA 92108 | Mr. Mike Campbell 714/236-4240 | ESL VESL Vocational training Employment services | San Diego County |
| ACCESS 6920 Linda Vista Road San Diego, CA 92111 | Mr. Harold D. Rowe 714/560-0871 | Employment services Vocational education | San Diego County |
| International Rescue Committee 1419 University Avenue San Diego, CA 92103 | Ms. Cynthia A. Jensen/ Mr. Bob Montgomery 714/299-3411 | Employment services | San Diego County |
| Union of Pan Asian Communities Indochinese Service Center 1031 - 25th Street San Diego, CA 92102 | Ms. Bok Lim C. Kim 714/235-9710 Ms. Beverly C. Yip 714/232-6454 | Social services Health related services | San Diego County |
| U.C. Medical Center, San Diego Center for Indochinese Health Education 225 Dickenson, H772B San Diego, CA 92103 | Dr. Antonio Catanzaro 714/294-5550 | Health related services Vocational education | San Diego County |
| Catholic Charities Diocese of San Bernardino 568 N. Mountainview San Bernardino, CA 92401 | Ms. Maxine Diehl 714/888-7711 | Employment services Social services | San Bernardino and Riverside Counties |
| Chaffey Community College Dist. 5885 Haven Avenue Alta Loma, CA 91701 | Mr. Art Olguin Mr. James Catanzaro 714/987-1737 | Employment services Vocational education ESL VESL | San Bernardino, Riverside and Eastern Los Angeles Counties |
| St. Anselm's Immigrant and Refugee Community Center 13091 Galway Street Garden Grove, CA 92644 | Father David C. Pettit 714/537-0608 | ESL VESL | Orange County |

2/24/81

STATE OF CALIFORNIA
 PROVIDERS OF SERVICES TO INDOCHINESE REFUGEES
 IN NORTHERN CALIFORNIA

| <u>Agency</u> | <u>Contact Person</u> | <u>Service Components</u> | <u>Area Served</u> |
|---|---|------------------------------|---|
| Sunnyvale Community Services, Inc. 846 West McKinley Avenue Sunnyvale, CA 94086 | Ms. Nina M. Hoppman 408/738-4321 | Social services | Northern Santa Clara County |
| Santa Clara County Asian Law Alliance 701 North First Street, #222 San Jose, CA 95112 | Mr. Glenn P. Sugihara 408/287-9710 | Social services | Santa Clara, Monterey and Santa Cruz Counties |
| San Jose Community College District San Jose City College 2100 Moorpark Avenue San Jose, CA 95128 | Dr. Greg S. Ohanneson 408/298-2181 | VESL Vocational education | San Jose and Milpitas |
| Catholic Social Services of Santa Clara County 2175 The Alameda San Jose, CA 95126 | Mr. Michael Hinsley 408/249-2541 | Employment services | Santa Clara, Monterey, and Santa Cruz Counties |
| Young Men's Christian Association of San Francisco 220 Golden Gate Avenue San Francisco, CA 94102 | Ms. Pamela D. Von Wiegand 415/885-0460 | ESL | San Francisco County |

2/24/81

STATE OF CALIFORNIA
 PROVIDERS OF SERVICES TO INDOCHINESE REFUGEES
 IN SOUTHERN CALIFORNIA

| <u>Agency</u> | <u>Contact Person</u> | <u>Service Components</u> | <u>Area Served</u> |
|--|-------------------------------------|---|--|
| Rancho Santiago Community College District 17th at Bristol Street Santa Ana, CA 92701 | Ms. Fredith Laub 714/667-3422 | ESL VESL | Orange County |
| Lao Family Community, Inc. 1140 South Bristol Street Santa Ana, CA 92704 | Mr. Xeu Vang Vangui 714/556-9520 | ESL Vocational education Employment services Social services | Orange County and part of Riverside and San Bernardino Counties |
| Huntington Beach Union High School District 10251 Yorktown Avenue Huntington Beach, CA 92647 | Ms. Sheila Marcus 714/964-6855 | ESL | Westminster, Fountain Valley, Huntington Beach, Midway City, and Seal Beach |
| International Institute of Orange County 1144 South Broadway Santa Ana, CA 92707 | Mr. John E. Maybury 714/547-0384 | ESL | Orange County |
| Catholic Community Agencies Indochina Job Center 2110 East First Street, Suite 115 Santa Ana, CA 92705 | Mr. Dennis C. White 714/953-9236 | Employment services | Orange County |
| Vietnamese Community of Orange County, Inc. 9107 Bolsa Avenue Westminster, CA 92683 | Mr. Do Dinh Tuan 714/894-9875 | Social services | Orange County |
| Pacific Asian American Center 1904 South Main Street Santa Ana, CA 92707 | Mr. Al Alferos 714/641-8446 | Employment services | Huntington Beach, Garden Grove and Westminster |

STATE OF CALIFORNIA
 PROVIDERS OF SERVICES TO INDOCHINESE REFUGEES
 IN SOUTHERN CALIFORNIA

| <u>Agency</u> | <u>Contact Person</u> | <u>Service Components</u> | <u>Area Served</u> |
|---|---|---|--|
| Orange Co. Human Services Agency/Public Health and Medical Services 1725 West 17th Street Santa Ana, CA 92706 | Mr. Lam Vu 714/834-6896 | Health related services | Orange County |
| Santa Barbara City College Indo-Chinese Refugee ESL Program 914 Santa Barbara Street Santa Barbara, CA 93101 | Joyce Christian Dr. Joseph Bagnall 805/962-8144 | ESL | Central Santa Barbara County |
| Catholic Welfare Bureau Archdiocese of Los Angeles 1400 West 9th Street Los Angeles, CA 90015 | Ms. Elizabeth Kirsnis 213/385-7211 | Social services Employment services Social services | Portion of Los Angeles County (Pasadena, Glendale, Burbank, Hollywood, and Culver City) Santa Barbara and Ventura Counties |
| Pacific Asian Consortium on Employment (PACE) 1851 South Westmoreland Avenue Los Angeles, CA 90006 | Mr. Kerry N. Doi 213/748-8431 | Employment services Vocational education | San Fernando Valley, Central and South Bay Regions of Los Angeles |
| Long Beach City College Resource Development Office 4901 East Carson Street Long Beach, CA 90808 | Mr. James Kossler 213/420-4560 | ESL VESL Vocational education Employment services | Long Beach, Signal H , Avalon, Lakewood and par of Los Angeles County |
| Hacienda La Puente Unified School District 15959 East Gale Avenue La Puente, CA 91745 | Ms. Lynda Appleton Mr. Don Roth 213/968-4638 | ESL VESL Vocational education Employment services | San Gabriel Valley |
| Los Angeles Unified School District 1320 West Third Street Los Angeles, CA 90017 | Ms. Carol Porter 213/625-5555 | ESL VESL Vocational education Employment services | Greater Los Angeles |

2/24/81

STATE OF CALIFORNIA
 PROVIDERS OF SERVICES TO INDOCHINESE REFUGEES
 IN SOUTHERN CALIFORNIA

| <u>Agency</u> | <u>Contact Person</u> | <u>Service Components</u> | <u>Area Served</u> |
|---|--|---------------------------|--|
| International Institute of Los Angeles 435 South Boyle Avenue Los Angeles, CA 90033 | Ms. Agnes P. Matica 213/264-6210 | Social services | Los Angeles, Whittier, Norwalk, San Gabriel, Valley and Pomona |
| Long Beach Department of Public Health 2655 Pine Avenue Long Beach, CA 90806 | Dr. Rugmini S. Shah 213/427-7421 | Health related services | Long Beach |
| Los Angeles County Department of Health Services 313 North Figueroa Los Angeles, CA 90012 | Nancy Keller 213/922-8241 Mr. Chris Hayden 213/974-7701 | Health related services | Los Angeles County |
| Lutheran Social Services of Southern California 2468 West Pico Boulevard Los Angeles, CA 90006 | Rev. John H. Wagner, Jr. 213/385-2191 | Social services | San Fernando Valley |
| Employment Development Dept. WIN Section, MIC #37 800 Capitol Mall Sacramento, CA 95814 | Mr. Forrest E. Boomer 916/322-4465 | Employment services | Orange, San Diego, San Bernardino, and Riverside Counties |

2/24/81

STATE OF CALIFORNIA
 PROVIDERS OF SERVICES TO INDOCHINESE REFUGEES
 IN SOUTHERN CALIFORNIA

| <u>Agency</u> | <u>Contact Person</u> | <u>Service Components</u> | <u>Area Served</u> |
|---|--|---|--|
| Chinatown Service Center 600 North Broadway Los Angeles, CA 90012 | Ms. Deborah Ching 213/680-4288 | Social services | Los Angeles |
| El Monte Adult School 3537 Johnson Avenue (860 E. Valley) El Monte, CA 91731 | Mr. Dick Manning, Rosemead 213/575-2347 - El Monte 213/573-4000 - Rosemead | ESL Vocational education Employment services | Alhambra, San Gabriel San Marino, Arcadia, Temple City, Baldwin Park, El Monte, South El Monte, Rosemead, Monterey Park and Montebello |
| Alhambra Adult School 101 South Second Street Alhambra, CA 91801 | Mr. Ben N. Noodleman 213/289-5047 | ESL Vocational education | Alhambra, Monterey Park and San Gabriel |
| Harbor College Indochinese Refugee Program 1111 Figueroa Place Wilmington, CA 90740 | Mr. Hiep Hoa Trinh 213/518-1000 | Employment services Social services | Wilmington, San Pedro, Harbor City, Lomita, Carson, Gardena, Los Angeles (part), Torrance (part) |
| Pasadena Area Community College District Occupational Education 1570 East Colorado Pasadena, CA 91106 | Dr. Vernon C. Halcromb 213/578-7301 | ESL Vocational education Employment services | Greater San Gabriel Valley |
| Pomona Adult School 180 East Mission Boulevard Pomona, CA 91766 | Mrs. Barbara Thompson 714/629-2551 | ESL Vocational education Employment services | Pomona, Claremont, LaVerne, San Dimas Cucamonga, Diamond Bar |
| Southern California Council of Churches 813 Hope Street Room 31 Los Angeles, CA 90017 | Rev. Dan Barrett 213/622-5191 | Social services ESL (Hawthorne area only) Employment services (Hawthorne area only) | Hawthorne and Long Beach |

| <u>Agency</u> | <u>Contact Person</u> | <u>Area Served</u> |
|--|---|----------------------|
| Association for Children's Rights and Services 571 Vallejo Street San Francisco, CA 94133 | Wendy Wong 415/391-8993 | San Francisco County |
| Cross Cultural Family Center 1830 Sutter Street San Francisco, CA 94115 | Jean Baker 415/567-6069 | San Francisco County |
| International Institute of San Francisco 2209 Van Ness Avenue San Francisco, CA 94109 | Audrey Doughty 415/776-3803 (site) Carol Streater 415/673-1720 | San Francisco County |
| Catholic Charities 2451 Country Club Boulevard Stockton, CA 95204 | Vince Brown 209/948-1554 | San Joaquin County |
| Alum Rock Union Elementary School District 2930 Gay Avenue San Jose, CA 95127 | Arleen Bricarell 408/259-8340 | Santa Clara County |
| Center for Community Development, Inc. 320 E. Philadelphia Street Pomona, CA 91766 | Anita Hansen, Director 714/591-3861 | Los Angeles County |
| Hacienda La Puente Unified School District 1110 Fickewirth La Puente, CA 91749 | Maryann Suggs 213/968-1536 | Los Angeles County |

12/19/80

REFUGEE CHILD DAY CARE

Agency

Department of Education
1500 5th Street, Third Floor
Sacramento, CA 95814

The following is a list of child care providers:

Berkeley Unified School District
2134 Grove Street
Berkeley, CA 94704

First Trinity Child Development
Center
1431 17th Avenue
Oakland, CA 94696

Korean Community Center of the
East Bay
3525 Kansas Street
Oakland, CA 94619

Oakland Unified School District
1025 Second Avenue
Administration Building Annex
Oakland, CA 94606

St. Vincent's Day Home
1086 8th Street
Oakland, CA 94607

Contra Costa Children's Council
2253 Concord Boulevard
Concord, CA 94520

Shiloh Arms Child Development
Center
3949 23rd Avenue
Sacramento, CA 95813

Contact Person

George Perry
415/644-6202

Shannon Borrego
415/533-0700

Hyo Jin Bang
415/530-2188

Katherine Cowling
415/836-8328

Sister Ann Maureen
415/832-8324

Ken Jaffe, Exec. Director
415/676-5437

Lorine Fowler
916/453-1309

Area Served

Alameda County

Alameda County

Alameda County

Alameda County

Alameda County

Contra Costa County

Sacramento County

12/19/80

| <u>Agency</u> | <u>Contact Person</u> | <u>Area Served</u> |
|--|---------------------------------|---------------------|
| ACCESS 6970 Linda Vista Road San Diego, CA 92111 | Hal Rowe 714/560-0871 | San Diego County |
| International Institute for Urban and Human Development 2423 Morena Boulevard San Diego, CA 92110 | Thomas MacCalla 714/275-2820 | San Diego County |
| National School District 1500 "N" Street National City, CA 92050 | Ann Riggs 714/474-6791 | San Diego County |
| San Diego Unified School District 7666 Bobolink Way San Diego, CA 92123 | Grace Perkins 714/293-8226 | San Diego County |
| DeAnza College Child Development Center 21250 Stevens Creek Blvd. Cupertino, CA 95014 | Doreen Croft 415/996-4863 | Santa Clara County |
| Santa Barbara County Welfare Department 117 East Carrillo Santa Barbara, CA 93101 | Betsy Beatty 805/962-9161 | Santa Barbara Count |

| <u>Agency</u> | <u>Contact Person</u> | <u>Area Served</u> |
|--|---------------------------------------|--------------------|
| International Institute of Los Angeles 435 S. Boyle Los Angeles, CA 90033 | John Phalen 213/264-6210 | Los Angeles County |
| Pomona Unified School District 800 S. Carey Avenue Pomona, CA 91766 | Dr. Rafael Estupintan 714/823-1461 | Los Angeles County |
| Coast Community College District 1370 Adams Avenue Costa Mesa, CA 92626 | Donald Averill 714/556-5894 | Orange County |
| Garden Grove Unified School District 11262 Garden Grove Boulevard Garden Grove, CA 92643 | James Griffis 714/638-6305 | Orange County |
| Human Services Agency/Social Services (County Welfare Department) 515 North Sycamore Street Santa Ana, CA 92702 | Beverly Hunter 714/834-2978 | Orange County |
| Orange County Department of Education 1300-B S. Grand Avenue Santa Ana, CA 92705 | Fred Koch 714/953-3953 | Orange County |
| Lao Family Community, Inc. 1140 S. Bristol Santa Ana, CA 92704 | Xeu Vang Vangyl 714/556-9520 | Orange County |

REFUGEE MENTAL HEALTH CARE

SOUTHERN CALIFORNIA

| | <u>Contact Person</u> | <u>Area Served</u> |
|--|--|--------------------|
| Association of Vietnamese Elderly People 1200 South Manhattan Blvd. Los Angeles, CA 90019 | Robert J. Dickey 213/385-7211 | Los Angeles County |
| Center for Pacific Asian Family 1543 Olympic Room 319 Los Angeles, CA 90015 | Nilda Rimonte 213/388-0446 | Los Angeles Coun. |
| Special Services for Groups, Inc. 2400 South Western Avenue Los Angeles, CA 90018 | Royal Morales 213/388-1474 | Los Angeles County |
| Orange County Human Services Agency 515 North Sycamore Street Santa Ana, CA 92701 | Timothy Mullins 714/834-6426 | Orange County |
| Linda Vista Health Care Center 6973 Linda Vista Road San Diego, CA 92111 | Roberta Feinberg 714/279-0925 | San Diego County |
| Union of Pan Asian Communities 4379 30th Street #7 San Diego, CA 92104 | Huong Kathy Do 714/280-2121 232-6454 | San Diego County |

REFUGEE MENTAL HEALTH CARE

Agency

Department of Mental Health
2260 Parktowne Circle
P.O. Box 254829
Sacramento, CA 95825

NORTHERN CALIFORNIA

Asian Community Mental Health Board
433 Jefferson Street
Oakland, CA 94607

Interfaith Service Bureau
3720 Folsom Blvd.
Sacramento, CA 95816

International Institute of
San Francisco
2209 Van Ness Avenue
San Francisco, CA 94109

Richmond Area Multi-Services
Center
3632 Balboa
San Francisco, CA 94121

Asian Americans for Community
Involvement
3065 Middlefield Rd.
Suite 3
Palo Alto, CA 94306

Contact Person

Roger G. Lum, M.D.
415/451-6729

Elling E. Ramsey
916/484-1998

Le Tai Rieu, M.D.
415/771-6900

Herbert Wong, Ph.D.
415/668-5955

Allan Seid, M.D.
415/494-8327

Area Served

Alameda County
Contra Costa County

Sacramento County

San Francisco County

San Francisco County

Santa Clara County